

ELECTRICAL

	Voltage	4-20mA	CAN
Supply Voltage	+6 to +26 VDC*	+9 to +26 VDC	+5 to +26 VDC
Over Voltage Protection	>32 VDC		
Power Consumption	<2.9 W	<5.6 W	<2.8 W
Reverse Polarity Protection	to -32 V DC		
Analogue Resolution	10 bit		
Report Rate	10 Hz		1 Hz
Sensor Configuration	Accessible via USB		

* Supply voltage to be minimum 0.5 V above output voltage

ANALOGUE OUTPUTS

	Voltage	4-20mA
Channel 1 (fine)	0 – 10 V DC (configurable)	1 mA – 20 mA (configurable)
Channel 2 (Coarse)	0 – 10 V DC (configurable)	1 mA – 20 mA (configurable)
Channel 3 (Oil/Temp)	0 – 10 V DC (configurable)	1 mA – 20 mA (configurable)
Error Indication	0 – 10 V DC (configurable)	1 mA – 20 mA (configurable)
Optional Output Inhibit (during zero/span)	0 – 10 V DC (configurable)	1 mA – 20 mA (configurable)

CONNECTIONS

Sensor Wiring	26 AWG PTFE 3G210 Screened with DR-25 Jacket
Armour	Optional

CHEMICAL COMPATIBILITY

Fuels	Diesel, Gasolene
Oils	Hydraulic, Gear, Mineral, Vegetable, Synthetic Ester, Semi-synthetic, Polyalphaolefin (PAO), Polyalkyleneglycol (PAG)
Coolants	Ethylene Glycol, water
Fluids	Salt water
Differential Pressure	10 Bar
Cable Pull	3 axis, 50 N
General Handling	1m Within Packaging on all 3 sides

MECHANICAL

Sensor Size	57mm x ø24.5mm
Junction Box	105.5mm x 105.5mm x 66mm
Sensor Mounting	2 off M6 Socket Cap Screws (not supplied)
Weight	0.70kg
Materials (sensor)	Aluminium Alloy, FEP, PEI
Materials (Junction box)	Aluminium Alloy, st/steel, polyester

DIGITAL OUTPUTS

J1939 Data length	8 bytes
PGN	130816
Byte 0	Coarse measurement percentage, no scaling Value 255 – optional output inhibited during calibration
Byte 1	Fine measurement percentage, no scaling Value 255 – optional output inhibited during calibration
Byte 2	8 Status bits Bit 0 - High/Low temperature exceeded Bit 1 - Oil Upper threshold exceeded Bit 2 - Oil Lower threshold exceeded Bit 3 - Fine measurement error Bit 4 - Coarse measurement error Bit 5 - Oil measurement error Bit 6 - Internal temperature sensor error Bit 7 - External temperature sensor error
Byte 3-7	Manufacturer use

ENVIRONMENTAL

Protection Class	Sensor	IP66 / IP68 / IP69k to EN60529
	Enclosure	IP65 to EN60529
Operating temp	Sensor	-40°C to +150°C to EN60945, EN60068-2-1, ISO16750-4
	Enclosure	-40°C to +85°C to EN60945, EN60068-2-1, ISO16750-4
Humidity		95% RH +55°C EN60945, EN60068-2-30 Test Db, ISO16750-4
Thermal Shock		EN60945, EN60068-2-14 Test Nb, ISO16750-4

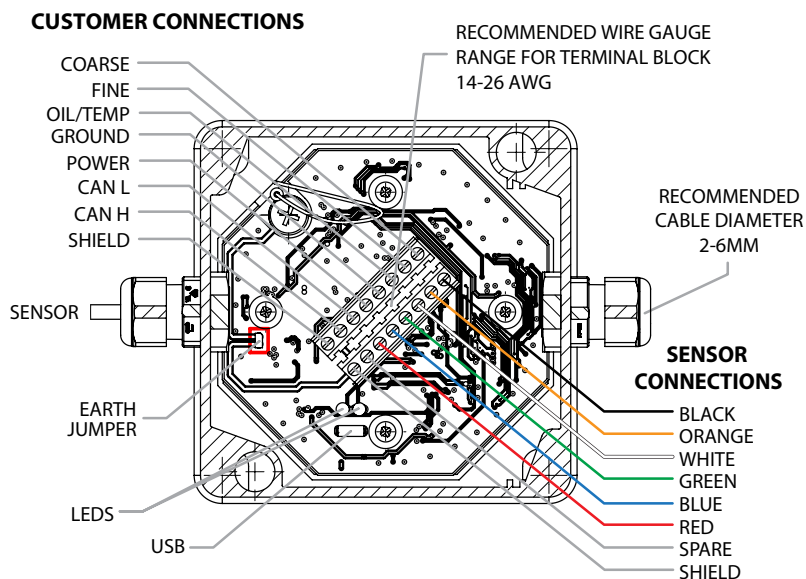
EMC

Marine	EN60945
Vehicle Components	EN 50498 & Automotive E-marking to UN ECE Reg10
Light Industrial	EN61000-6-3, EN61000-6-1
Heavy Industrial	EN61000-6-4, EN61000-6-2
Measurement Control	EN61326-2-1
Construction Machinery	EN13309
Earth Moving Machinery	ISO 13766
Agricultural & Forest Machinery	ISO 14982

VIBRATION

Marine EN60945	3 axis 2 to 13Hz, +/-1mm 13.2Hz to 100Hz constant acceleration of 0.7g
Industrial EN60068-2-6	3 Axis 10 to 55 Hz 0.75mm or 10g
Motorsport / Automotive	3 Axis Random 5 - 2000 Hz Up to 36g
Shock EN60068-2-27	3 Axis 25g, 6ms, 1000 cycles

Connections

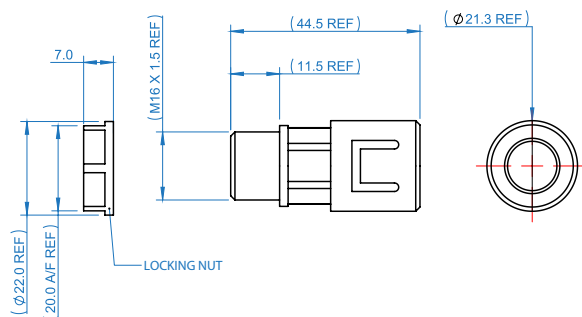


Part Numbers

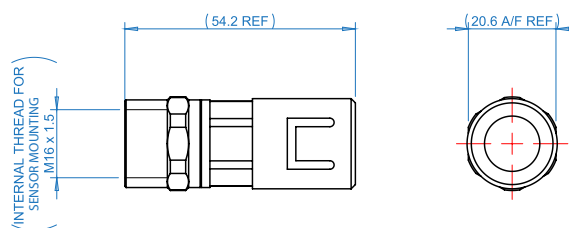
INDUSTRIAL OIL DEBRIS ASSY 4-20 mA	4212-PK-045
INDUSTRIAL OIL DEBRIS ASSY VOLTAGE	4212-PK-046
INDUSTRIAL OIL DEBRIS ASSY CAN	4212-PK-047
USB CABLE	1000-CO-116
USB STICK	1000-SW-001
CONDUIT KIT MALE ADAPTOR FEMALE ADAPTOR CONDUIT TUBE M16 SEALING WASHER	4212-10-051-X

Conduit Kit

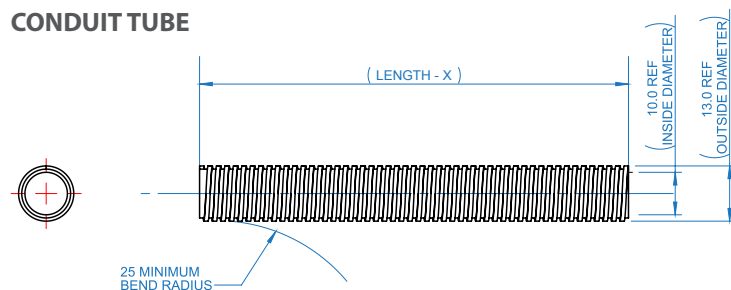
MALE ADAPTOR



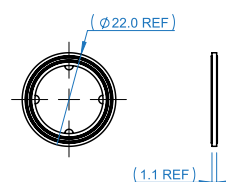
FEMALE ADAPTOR



CONDUIT TUBE



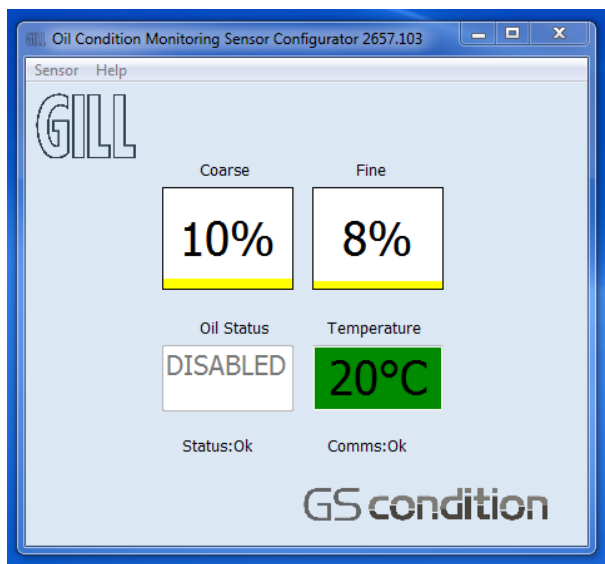
M16 SEALING WASHER



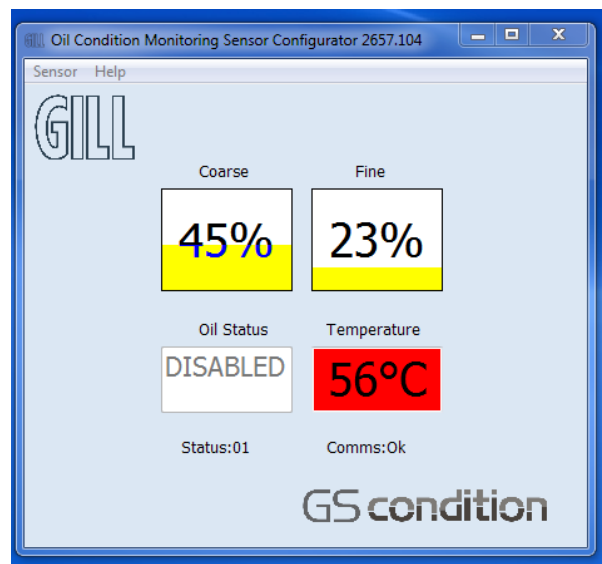
Max Temperature rating of conduit kit is 120°C

SENSOR CONFIGURATOR SOFTWARE

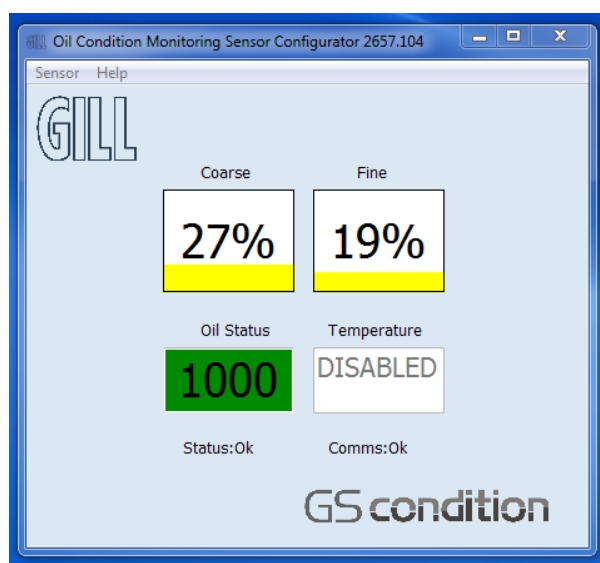
FINE / COARSE / TEMPERATURE



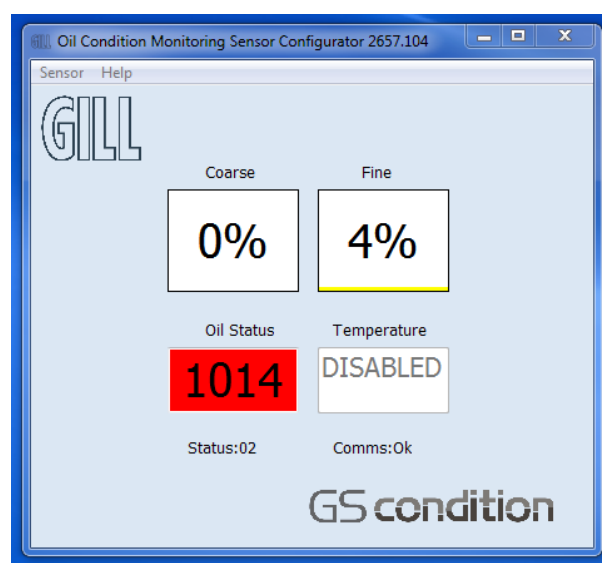
FINE / COARSE / TEMPERATURE



FINE / COARSE / DIELECTRIC



FINE / DIELECTRIC



GILL

Gill Sensors & Controls Limited

Unit 600 Ampress Park
Lymington, Hampshire
SO41 8LW

Tel: +44 (0) 1590 613 900
Fax: +44 (0) 1590 613 901
info@gillsc.com

Herbertek www.herbertek.se
info@herbertek.se
+46-18 590510



gillsc.com

CD4212 - I - Iss 3

Copyright © Gill Sensors & Controls Limited 2015

Gill Sensors & Controls Limited, Reg No. 08982641
Registered Office: The George Business Centre, Christchurch Road, New Milton, BH25 6QJ