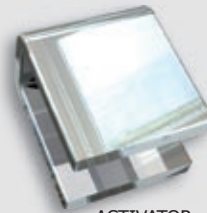




# 25mm Blade Sensor



SENSOR



ACTIVATOR



SIDE VIEW OF  
SENSOR/ACTIVATOR  
CONFIGURATION



## Key Features

- Non-Contact
- No Moving Sensor Parts
- Up to 25mm Linear Measurement
- Up to 90° Angular Measurement
- Fully Configurable Range
- Analogue/Digital Output
- Unlimited Mechanical Life
- Submersible

The 25mm Blade Sensor accurately senses the linear or angular position of a metallic 'activator' mounted away from the face of the sensor. The unique non-contact two-part design utilises Gill's patented inductive technology to provide a reliable, accurate output that will not deteriorate through use.

Small, light and robust, the sensor is fully electronic with on-board processing. The supplied software facilitates a fully configurable measurement range. Output signals are provided in three different formats and diagnostic information is given to assist in system fail-safe functionality.

At just 6mm thick installation is simple. Accuracy and durability are increased with the absence of mechanical linkages and the U-shaped activator can be formed as part of your application for minimum installation overhead. The sensor is available in standard and high-temperature formats and is available with standard or custom requested wiring options. Sealed to IP67, this sensor is ideal for a variety of applications where grime, moisture, temperature and vibration can have an adverse affect on other types of sensor.



## Specification

### Electrical

Supply Voltage	+4.8VDC to +30VDC
Over Voltage Protection	>31VDC
Supply Current	<10mA
Reverse Polarity Protection	to -30VDC
Resolution	10 bit over configured range
Sample Rate	1KHz

### Analogue Output

Measuring Range	Linear: ±12.5mm (Configurable) Rotary: ±45°C (Configurable)
Voltage Output Range	0-4.2V
Range Accuracy	±0.1mm or equivalent

### PWM Output

Measuring Range	Linear: ±12.5mm (Configurable) Rotary: ±45°C (Configurable)
Frequency	250Hz or 1KHz

### Serial Output

Data Type	Asynchronous ASCII Data
-----------	-------------------------

### Switch Output

Type	Switch to GND 32VDC Max, 8mA
------	------------------------------

### Mechanical

Size	6 x 40 x 50mm (DxWxL)
Sensor-Activator Clearance	0.5-2mm
Mounting	2 x ø4mm holes on a 30mm pitch
Weight	30g
Activator Materials	See notes overleaf
Materials Compatibility	Water, engine oil, engine coolant, diesel fuel, gasoline, salt spray, degreaser, degreaser tsp, ammonia and dust. All common automotive liquids and materials

### Environmental

Protection Class	IP67
Operational Temperature	-40°C to +85°C (standard) -40°C to +125°C (optional)
Storage Temperature	-40°C to +150°C
Dither Life	Non-Contact: No deterioration through use

### Options

Wiring	- Standard (28AWG) - Heavy Duty (20AWG) - Customer Specified
--------	--

# 25mm Blade Sensor



## Activator Materials

- EN3B Mild Steel or similar
- Copper
- Tinned Steel
- Others compatible, contact Gill with your requirement.



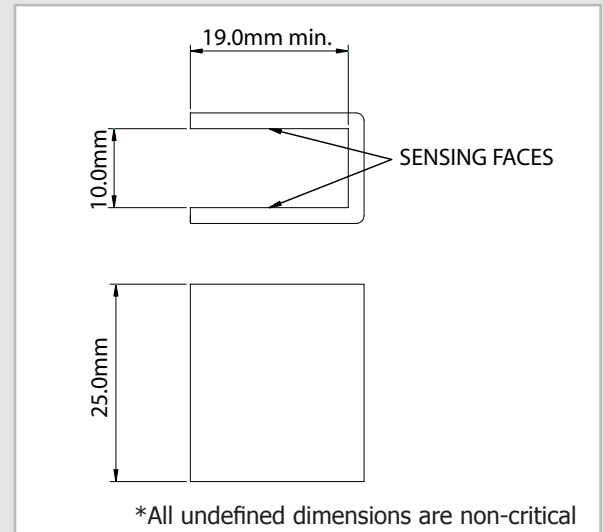
## Activator

The sensor requires a metallic activator to be mounted 0.5-2mm away from the sensing face. This can either be mechanically mounted to the moving object or machined into the application for minimal installation overhead. Below is a drawing showing the dimensions of our recommended standard activator. Please consult Gill for more information on activator design.



## Wiring

	Red	+4.8VDC to +30VDC Supply
	Black	System & Power Ground (GND)
	Blue	Switch Output
	Green	Serial Comms Input (Rx), RS232 Compatible
	White	Serial Comms Output (Tx), RS232 Compatible
	Yellow	Analogue Output: Voltage or PWM



## Dimensions

